

# Character Katz

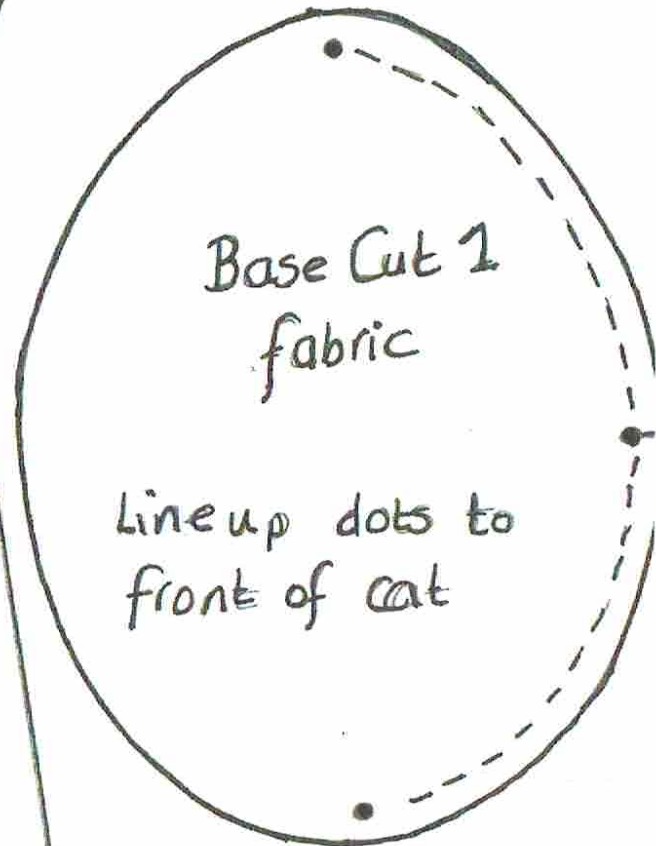


Main Body  
Cut 2 fabric

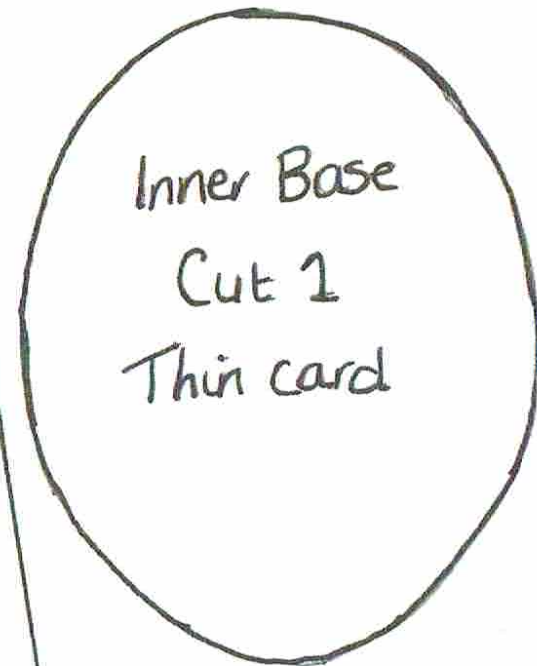
## Instructions:

- 1- Cut out all pieces
- 2- Embroider facial details
- 3- Attach base fabric to front main body
- 4- Sew main body pieces RST\*
- 5- Turn right way & firmly stuff
- 6- Add dried rice to give some weight - before finally stuffing
- 7- Place the thin card in fabric base & hand stitch into place

\* You may wish to <sup>insert!</sup> sew the ears in here!  
Decorate with ears, tail & anything else!



Base Cut 1  
fabric  
Line up dots to  
front of cat



Inner Base  
Cut 1  
Thin card

<sup>NOTE</sup>  
0.5cm Seam allowance